

# BODY & ACCESSORIES

**09**  
SECTION

ON-BOARD DIAGNOSTIC [POWER DOOR LOCK SYSTEM] . . . . .	09-02A	EXTERIOR TRIM . . . . .	09-16
ON-BOARD DIAGNOSTIC [AUDIO]. . . . .	09-02B	INTERIOR TRIM. . . . .	09-17
BODY PANELS] . . . . .	09-10	LIGHTING SYSTEMS. . . . .	09-18
DOORS AND LIFTGATE . . . . .	09-11	WIPER/WASHER SYSTEM . . . . .	09-19
GLASS/WINDOWS/MIRRORS . . . . .	09-12	ENTERTAINMENT . . . . .	09-20
SEATS . . . . .	09-13	POWER SYSTEMS . . . . .	09-21
SECURITY AND LOCKS . . . . .	09-14	INSTRUMENTATION/DRIVER INFO. . . . .	09-22
SUNROOF . . . . .	09-15	TECHNICAL DATA . . . . .	09-50
		SERVICE TOOLS. . . . .	09-60

## 09-02A ON-BOARD DIAGNOSTIC [POWER DOOR LOCK SYSTEM]

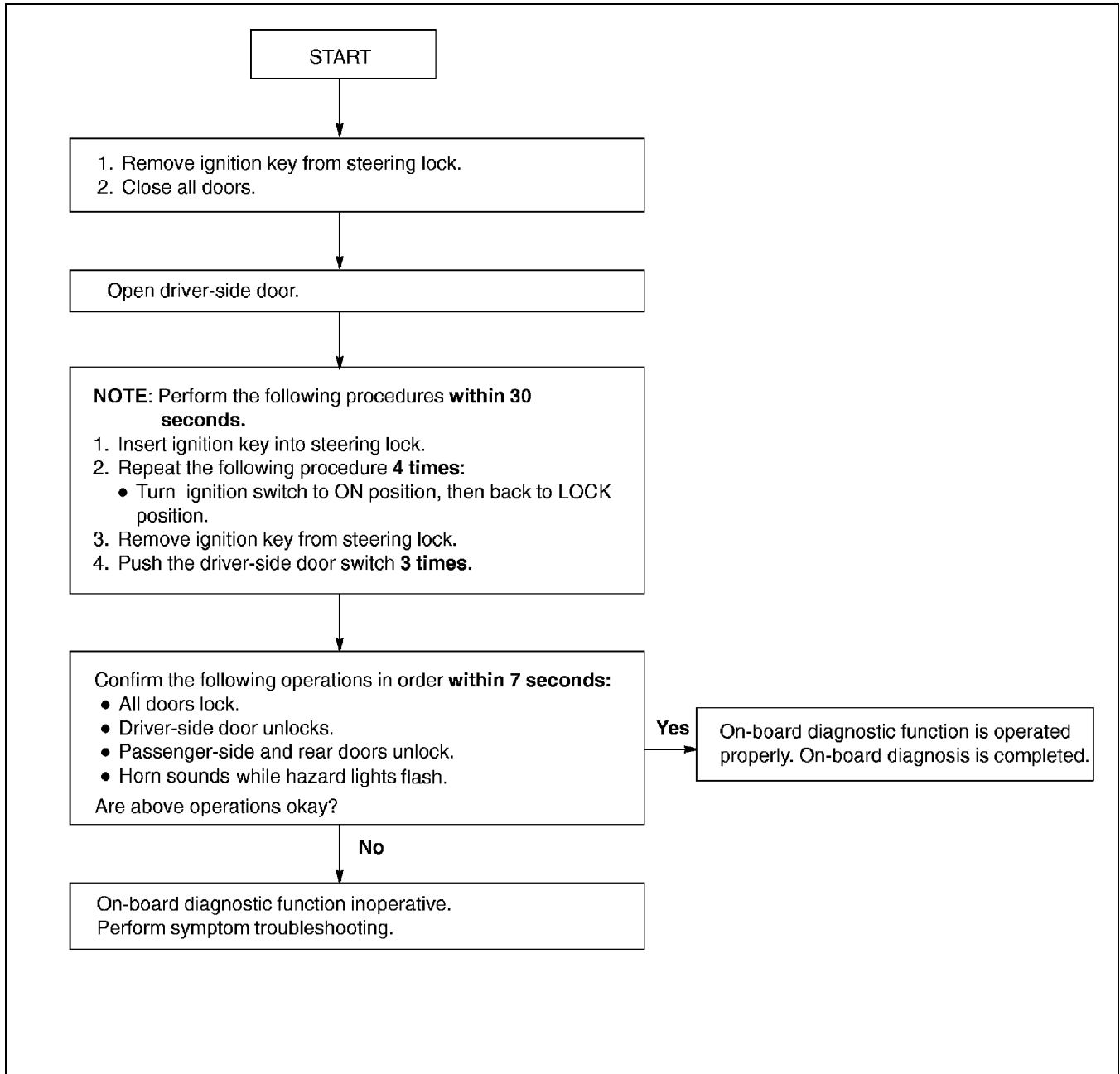
ON-BOARD DIAGNOSTIC FUNCTION [KEYLESS ENTRY SYSTEM] . . . . .	09-02A-2
---	----------

09-02A

# ON-BOARD DIAGNOSTIC [POWER DOOR LOCK SYSTEM]

## ON-BOARD DIAGNOSTIC FUNCTION [KEYLESS ENTRY SYSTEM]

A3U090269000W01



Z3U0902W002