

02-14 REAR SUSPENSION

REAR SUSPENSION

LOCATION INDEX 02-14-1

REAR SHOCK ABSORBER AND SPRING REMOVAL/INSTALLATION.. 02-14-2
 Coil Spring Installation Note..... 02-14-3

REAR SHOCK ABSORBER INSPECTION..... 02-14-3

REAR SHOCK ABSORBER DISPOSAL..... 02-14-3

REAR STABILIZER REMOVAL/INSTALLATION 02-14-4

Stabilizer Bushing and Bracket Installation Note02-14-4

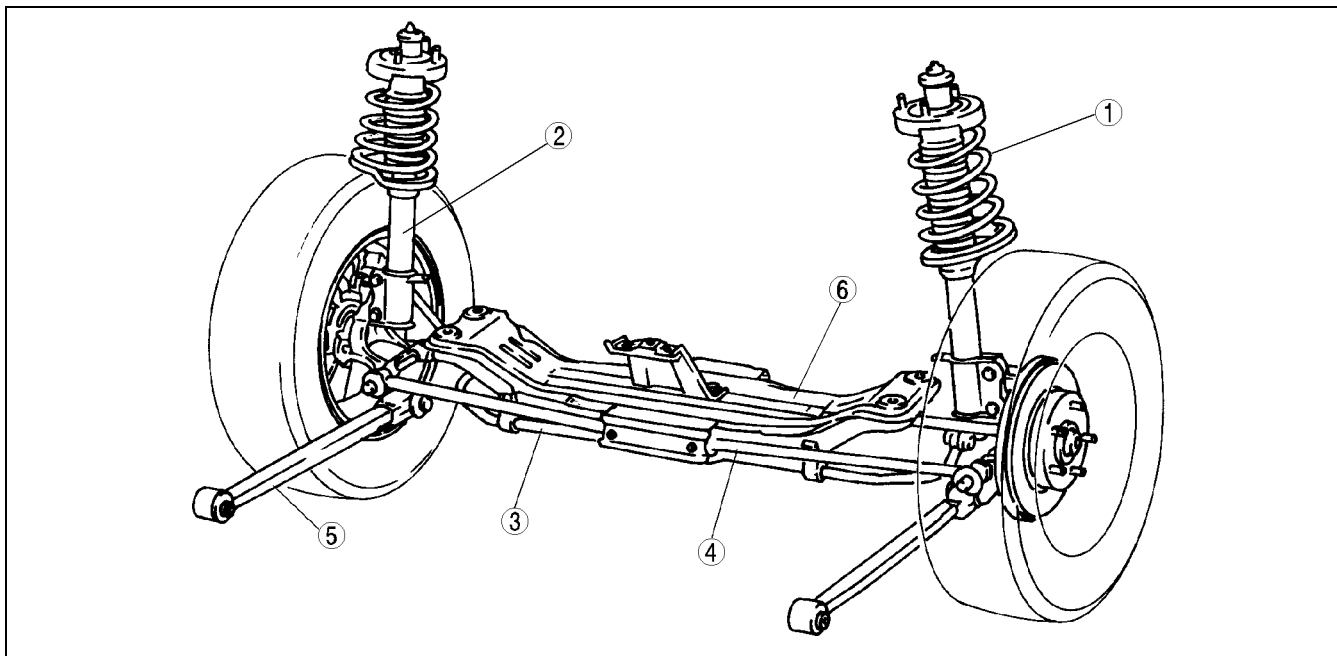
STABILIZER CONTROL LINK (REAR) INSPECTION02-14-4

LATERAL LINK AND TRAILING LINK REMOVAL/INSTALLATION.....02-14-5
 Nut, Cam Plate and Adjusting Cam Bolt Removal Note02-14-5
 Front Lateral Link Removal Note02-14-6
 Nut, Cam Plate, and Adjusting Cam Bolt Installation Note.....02-14-6

02-14

REAR SUSPENSION LOCATION INDEX

A3U021401016W01



Z3U0214W001

1	Rear shock absorber and coil spring (See 02-14-2 REAR SHOCK ABSORBER AND SPRING REMOVAL/INSTALLATION)
2	Rear shock absorber (See 02-14-3 REAR SHOCK ABSORBER INSPECTION) (See 02-14-3 REAR SHOCK ABSORBER DISPOSAL)
3	Rear stabilizer and stabilizer control link (See 02-14-4 REAR STABILIZER REMOVAL/INSTALLATION) (See 02-14-4 STABILIZER CONTROL LINK (REAR) INSPECTION)

4	Lateral link (See 02-14-5 LATERAL LINK AND TRAILING LINK REMOVAL/INSTALLATION)
5	Trailing link (See 02-14-5 LATERAL LINK AND TRAILING LINK REMOVAL/INSTALLATION)
6	Rear crossmember (See 02-14-6 REAR CROSSMEMBER REMOVAL/INSTALLATION)

REAR SUSPENSION

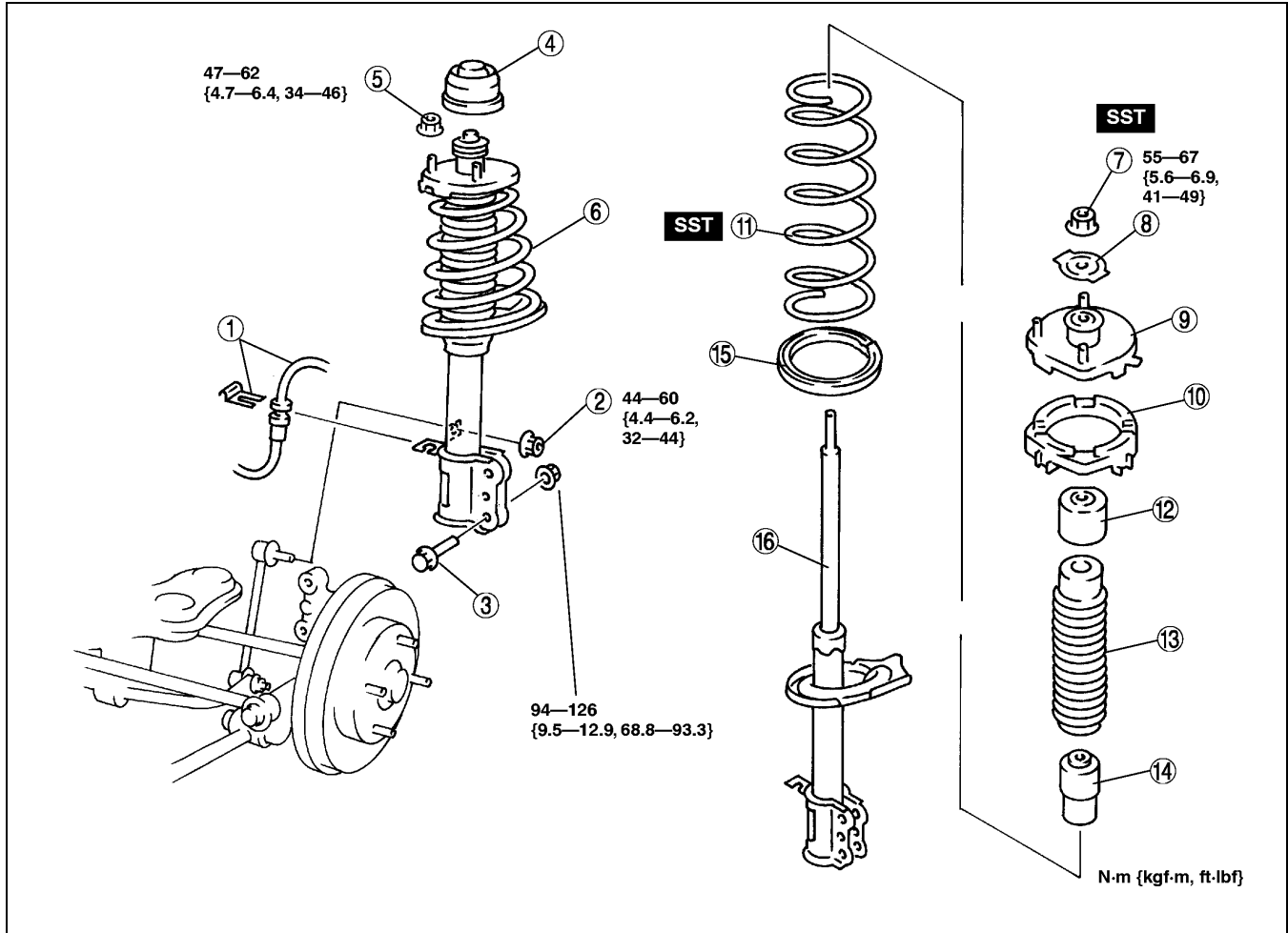
REAR SHOCK ABSORBER AND SPRING REMOVAL/INSTALLATION

A3U021405910W01

Caution

- Performing the following procedures without first removing the ABS wheel-speed sensor may possibly cause an open circuit in the harness if it is pulled by mistake. Before performing the following procedures, remove the ABS wheel-speed sensor (axle side) and set it to an appropriate place where the sensor will not be pulled by mistake while servicing the vehicle.

- For the 4SD, remove the rear seat belt. (See 08-11-2 REAR SEAT BELT REMOVAL/INSTALLATION.) For the 5HB, remove the trunk side trim. (See 09-17-15 TRUNK SIDE TRIM REMOVAL/INSTALLATION)
- Remove in the order indicated in the table.
- Install in the reverse order of removal.



X3U214WA0

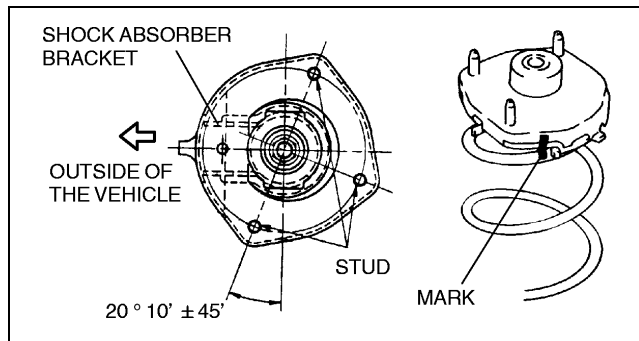
1	Clip and brake hose
2	Stabilizer control link nut
3	Shock absorber bolt
4	Cap
5	Nut
6	Rear shock absorber and spring
7	Piston rod nut (See 02-13-3 Piston Rod Nut Removal Note)
8	Washer

9	Mounting rubber
10	Upper spring seat
11	Coil spring (See 02-14-3 Coil Spring Installation Note)
12	Stopper seat
13	Dust cover
14	Bound stopper
15	Lower spring seat rubber
16	Rear shock absorber

REAR SUSPENSION

Coil Spring Installation Note

1. Temporarily install the coil spring, upper spring seat and mounting rubber on the shock absorber so that the lower end of the coil spring is seated on the step of the lower spring seat.
2. Mark the coil spring, upper spring seat and mounting rubber for proper installation as shown in the figure. (The following figure shows how to install the right side. Install the left side symmetrically.)
3. Align the marks of the coil spring and upper spring seat rubber. Protect the coil spring and upper seat spring using a piece of cloth, then set the **SSTs**.

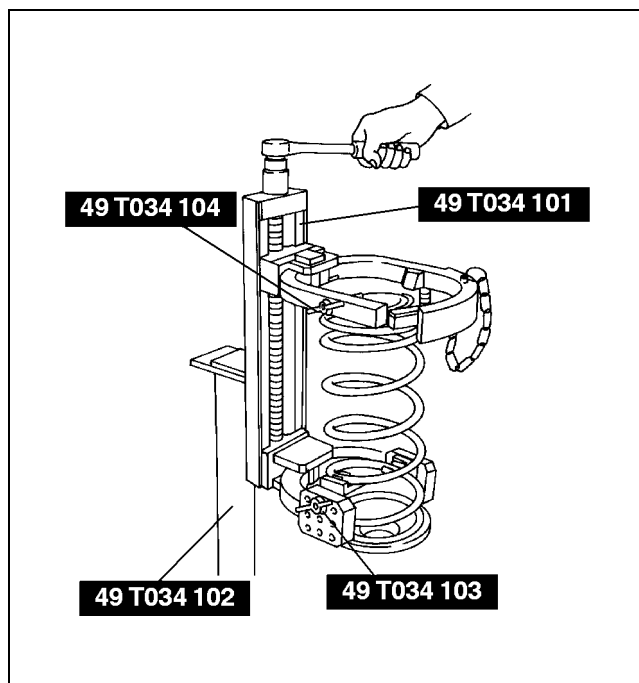


X3U214WA1

4. Compress the coil spring using the **SSTs**.
5. Install the lower spring seat rubber on the lower spring seat.
6. Install the shock absorber so that the lower end of the coil spring is seated on the step of the lower spring seat.
7. Align the marks of the mounting rubber and shock absorber.
8. Install the washer and piston rod nut, then remove the **SSTs**.

Piston rod nut tightening torque

55—67 N·m {5.6—6.9 kgf·m, 41—49 ft·lbf}



A3U0214W001

REAR SHOCK ABSORBER INSPECTION

1. Inspect the rear shock absorber using the same procedure as the front shock absorber. (See 02-13-4 FRONT SHOCK ABSORBER INSPECTION.)

A3U021428700W01

REAR SHOCK ABSORBER DISPOSAL

1. Dispose of the rear shock absorber using the same procedure as the front shock absorber. (See 02-13-4 FRONT SHOCK ABSORBER DISPOSAL.)

A3U021428700W02

02-14

REAR SUSPENSION

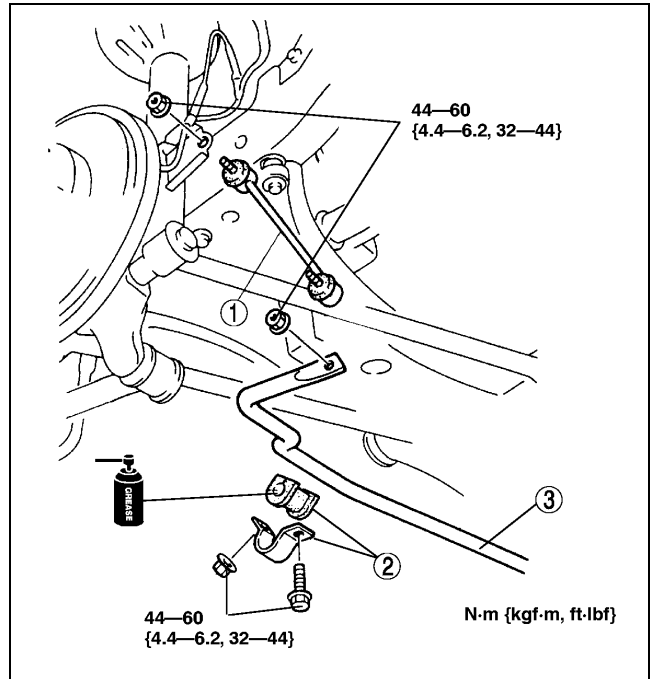
REAR STABILIZER REMOVAL/INSTALLATION

A3U021428100W01

1. Remove in the order indicated in the table.

1	Stabilizer control link
2	Stabilizer bushing and bracket (See 02-14-4 Stabilizer Bushing and Bracket Installation Note)
3	Rear stabilizer

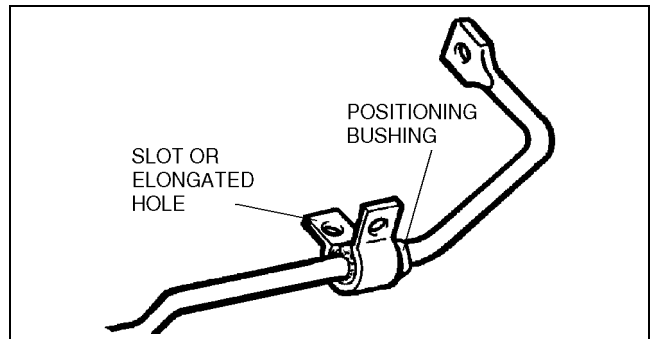
2. Install in the reverse order of removal.



X3U214WA3

Stabilizer Bushing and Bracket Installation Note

1. Align the bushing with the positioning bushing on the stabilizer bar.
2. Temporarily install the stabilizer bracket so that the slot (or elongated hole) faces downward.
3. Tighten the stabilizer bracket nut, then bolt.



Z3U0214W101

STABILIZER CONTROL LINK (REAR) INSPECTION

A3U021434150W01

1. Inspect the rear stabilizer control link in the same procedure as the front stabilizer control link inspection.
(See 02-13-8 STABILIZER CONTROL LINK (FRONT) INSPECTION.)

REAR SUSPENSION

LATERAL LINK AND TRAILING LINK REMOVAL/INSTALLATION

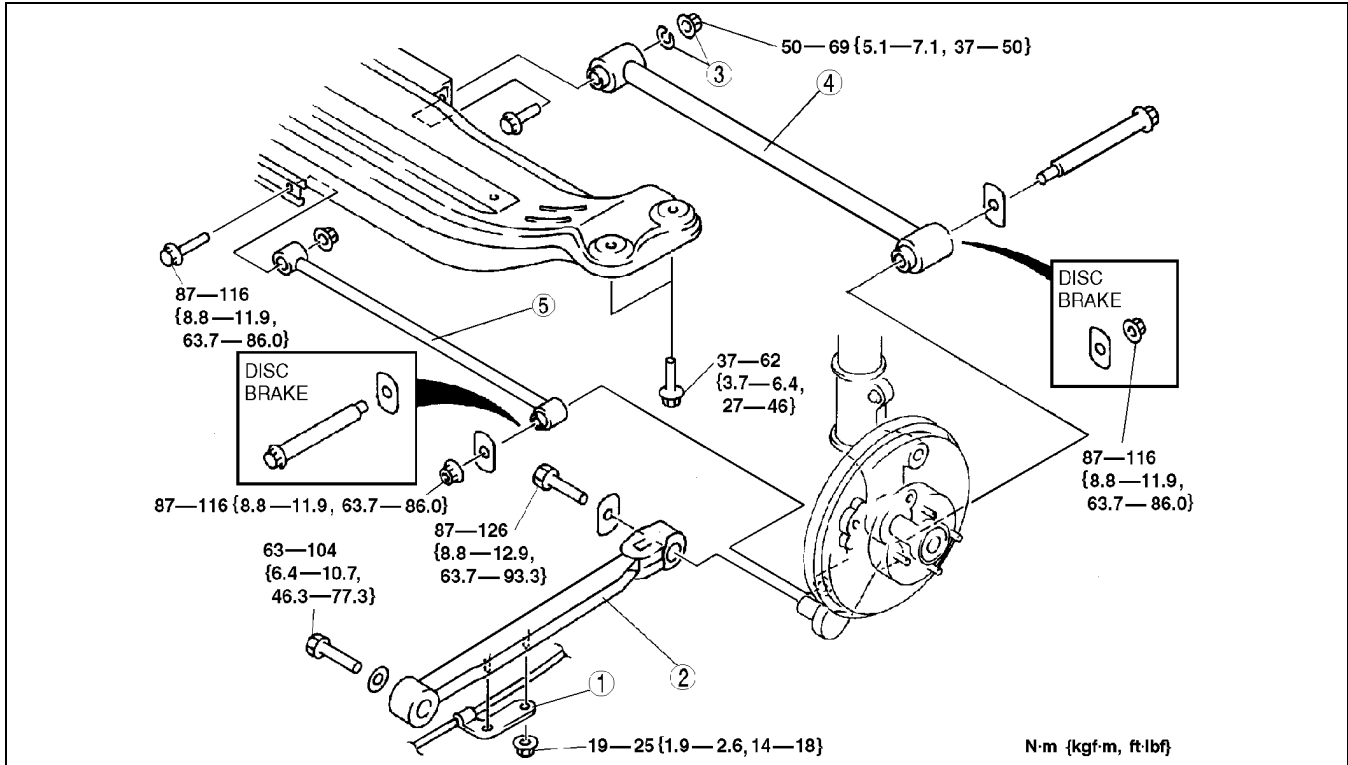
A3U021428600W01

Caution

- Performing the following procedures without first removing the ABS wheel-speed sensor may possibly cause an open circuit in the harness if it is pulled by mistake. Before performing the following procedures, remove the ABS wheel-speed sensor (axle side) and fix it to an appropriate place where the sensor will not be pulled by mistake while servicing the vehicle.

- Remove in the order indicated in the table.
- Install in the reverse order of removal.
- Inspect the rear wheel alignment and adjust it as necessary.

02-14



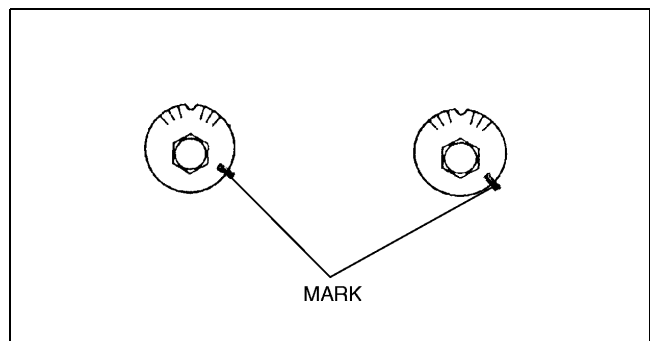
Z3U0214W006

1	Parking brake cable bracket
2	Trailing link
3	Nut, cam plate and adjusting cam bolt (See 02-14-5 Nut, Cam Plate and Adjusting Cam Bolt Removal Note) (See 02-14-6 Nut, Cam Plate, and Adjusting Cam Bolt Installation Note)

4	Rear lateral link
5	Front lateral link (See 02-14-6 Front Lateral Link Removal Note)

Nut, Cam Plate and Adjusting Cam Bolt Removal Note

- Before loosening the nut, make a mark on the cam plate and the crossmember for reference during installation.

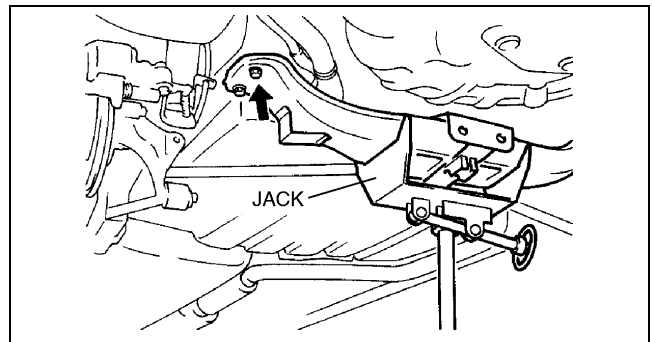


Y3U214WA1

REAR SUSPENSION

Front Lateral Link Removal Note

1. Support the rear crossmember using a jack, then remove the crossmember bolts.
2. Lower the crossmember to remove the lateral link bolt.



X3U214WA7

Nut, Cam Plate, and Adjusting Cam Bolt Installation Note

1. Install the cam plate so that the notch faces the same direction as the adjusting cam bolt.
2. Align with the mark made before removing the adjusting cam bolt.
3. Tighten the nut.

Tightening torque

50—69 N·m {5.1—7.1 kgf·m, 37—50 ft·lbf}

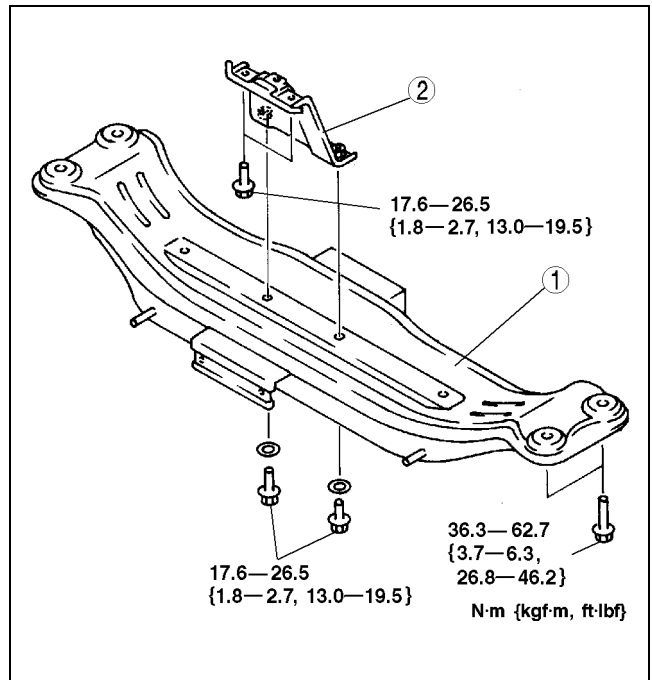
REAR CROSSMEMBER REMOVAL/INSTALLATION

A3U021428400W01

1. Remove the rear stabilizer. (See 02-14-4 REAR STABILIZER REMOVAL/INSTALLATION.)
2. Remove the front and rear lateral links. (See 02-14-5 LATERAL LINK AND TRAILING LINK REMOVAL/INSTALLATION.)
3. Remove in the order indicated in the table.

1	Rear crossmember
2	Crossmember bracket

4. Install in the reverse order of removal.
5. Inspect the rear wheel alignment and adjust it as necessary.



Z3U0214W100